



**Address** 2 1924 32<sup>nd</sup> St SW, Calgary AB  
**Date** August 14<sup>th</sup>, 2024  
**Name** Brent Sheppard | Maxwell Capital Realty  
**Email** bsheppard@maxwellrealty.ca  
**Phone** 403.253.5678

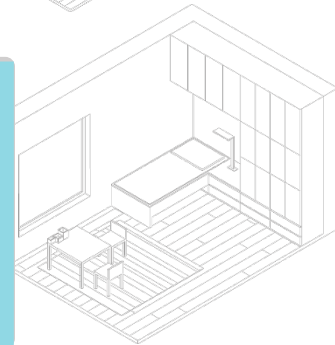
## FLOOR TOTALS

Main Level	604.95 sqft / 56.19 m2	RMS Total	1218.44 sqft / 113.19 m2
Upper Level	613.49 sqft / 56.99 m2	Total w/ basement	1823.39 sqft / 169.39 m2
Basement Total	604.95 sqft / 56.19 m2	Order Procedure	RECA RMS
Finished Basement	537.29 sqft / 49.91 m2	Exterior Wall Size	2X6
		Order Type	Attached Single Family



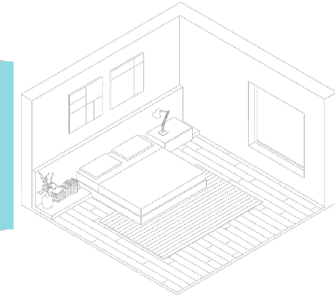
## ROOM DIMENSIONS

Kitchen	11'6" X 10'6" ft/in	M
Living Room	20'0" X 15'6" ft/in	M
Deck	10'6" X 8'6" ft/in	M
Rec Room	16'6" X 9'0" ft/in	B
Utilities w/Laundry	8'6" X 8'6" ft/in	B



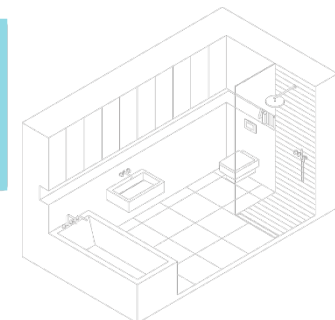
## BEDROOM DIMENSIONS

Primary Bedroom	15'0" X 11'6" ft/in	U
Bedroom Two	10'0" X 10'0" ft/in	U
Bedroom Three	14'0" X 11'0" ft/in	B



## BATHROOM PIECES AND ADDITIONAL ROOMS

Two Piece	7'0" X 4'6" ft/in	M
Four Piece (Ensuite)	6'6" X 6'0" ft/in	U
Four Piece (Ensuite)	11'6" X 5'6" ft/in	U
Four Piece	10'0" X 4'6" ft/in	B



\*Insured measurements are based on local guidelines.